

Custom systems

Model 9250 transducer display

09/2023

Applications

- Remote transducer monitoring
- Remote barometric pressure monitoring

Special features

- External transducer viewing
- Compatible with CPT9000, CPT6100, CPT6180, and CPT6020
- Supports ethernet and serial communication
- One year warranty



Model 9250 - Transducer display

Description

Application:

The Model 9250 is used in calibration laboratories and manufacturing facilities to remotely monitor up to 3 transducers.

Functionality:

The Model 9250 can be connected to an external transducer while also supporting Ethernet and RS-232 PC communication. Supported external transducers are Mensor's CPT9000, CPT6100, CPT6180, and CPT6020 digital pressure transducers.

Communication

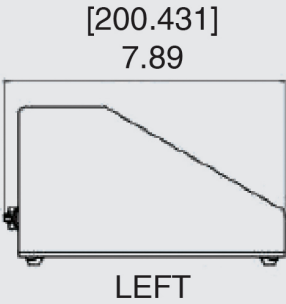
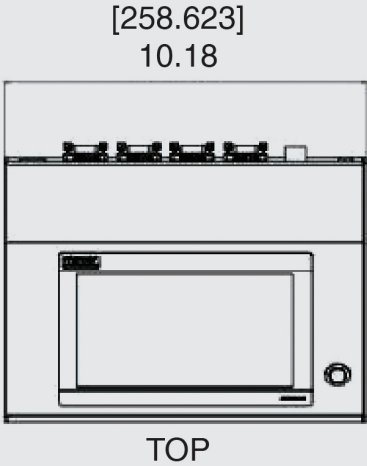
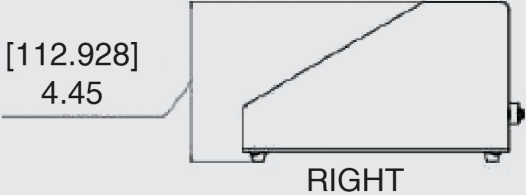
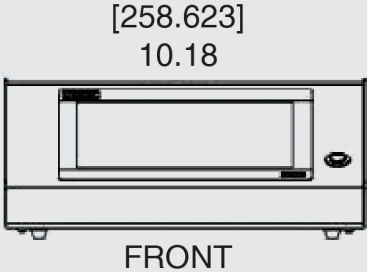
The local user interface is displayed on a 7" color LCD touchscreen. Navigation within the intuitive menu structure is easily learned. Recognizable touchscreen icons open screens for configuration and calibration. Communicating to a remote computer is achieved through RS-232 or Ethernet. Communication commands and queries are consistent with previous Mensor digital pressure gauges.

Specifications

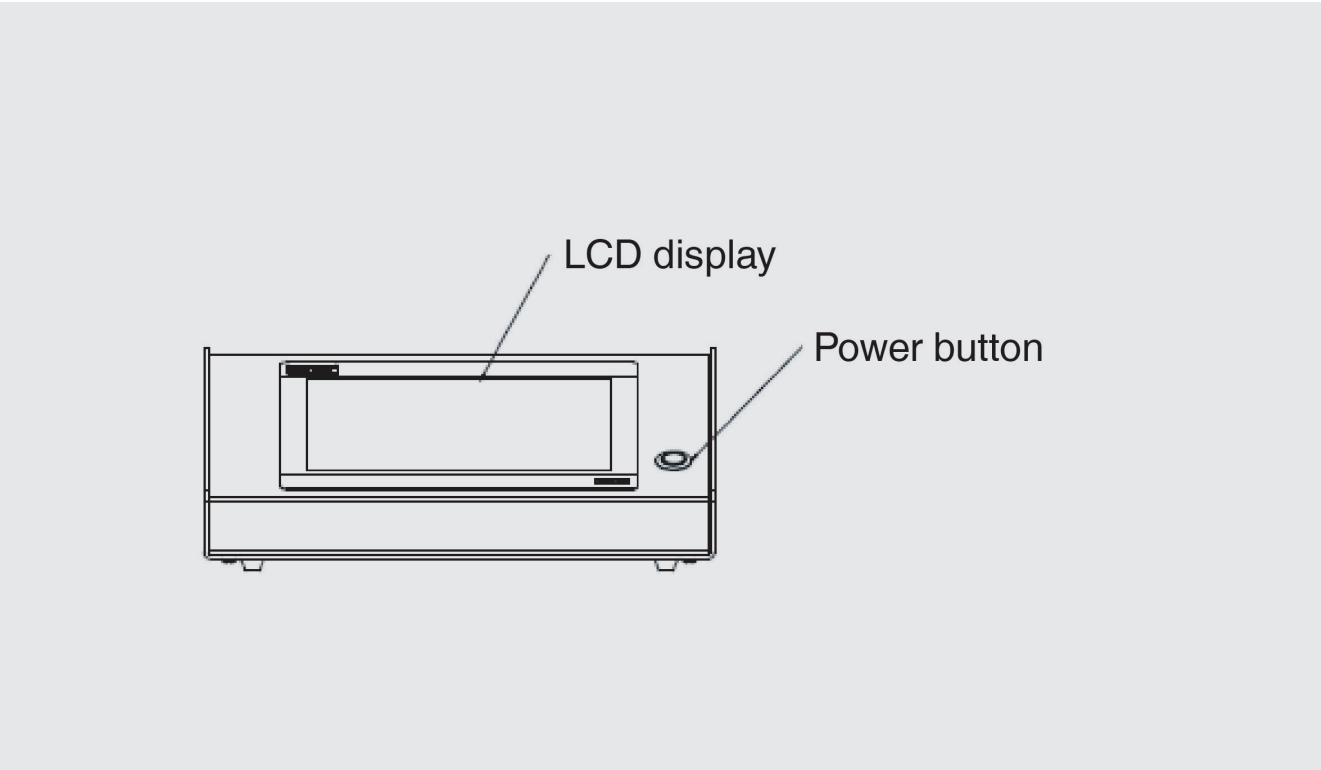
Model 9250

Basic instrument - Model 9250	
Instrument	
Instrument version	Standard: table top with rubber feet
Dimensions	See technical drawing on page 3
Weight	3.40 lbs./ 1.54 kg
Display	
Screen	7" color LCD
Resolution	Selectable from 4 to 6 digits, depending on range and units
Data entry	Touch screen keypad
Measurements units	Psi, psf, osi, atm, inH2O@4C, inH2O@60F, mbar, bar, Dy/cm2, pascal, hPa, kPa, MPa, inHg@0c, inHg@60F, mTorr, Torr, mmHg@0C, cmHg@0c, mmHg@0C, mmH2O@4C, cmH2O@4C, mH2O@4C, mmH2O@20C, cmH2O@20C, mH2O@20C, mSW, ftH2O@4C, ftH2O@20C, ftH2O@60F, inSW, ftSW, tsi, tsf, g/cm2, kg/cm2, kg/m2, % of Range, + plus 2 user defined units (multiplier from psi, bar or pascal)
Rate units	/sec., /min., /hr., /3-hr
Languages	English, German, Spanish, French, Italian, Portuguese, Polish, Russian, Chinese, Japanese, Korean
Measurement filters	Off, Low, Normal (default), High
Connections	
External transducer options	CPT9000, CPT6100, CPT6180, CPT6020
Voltage supply	
Power input requirements	100-120 or 200-240 VAC, 50-60Hz, 24VA max
Switching power supply	Output: 12 VDC, 1.67 A (includes 4 region specific plugs adapters)
Permissible ambient conditions	
Storage temperature range	0 to 70 ° C
Operating temperature range	15 to 40 ° C
Communications	
Remote interface	RS-232 and ethernet
Command sets	Mensor, Wika SCPI

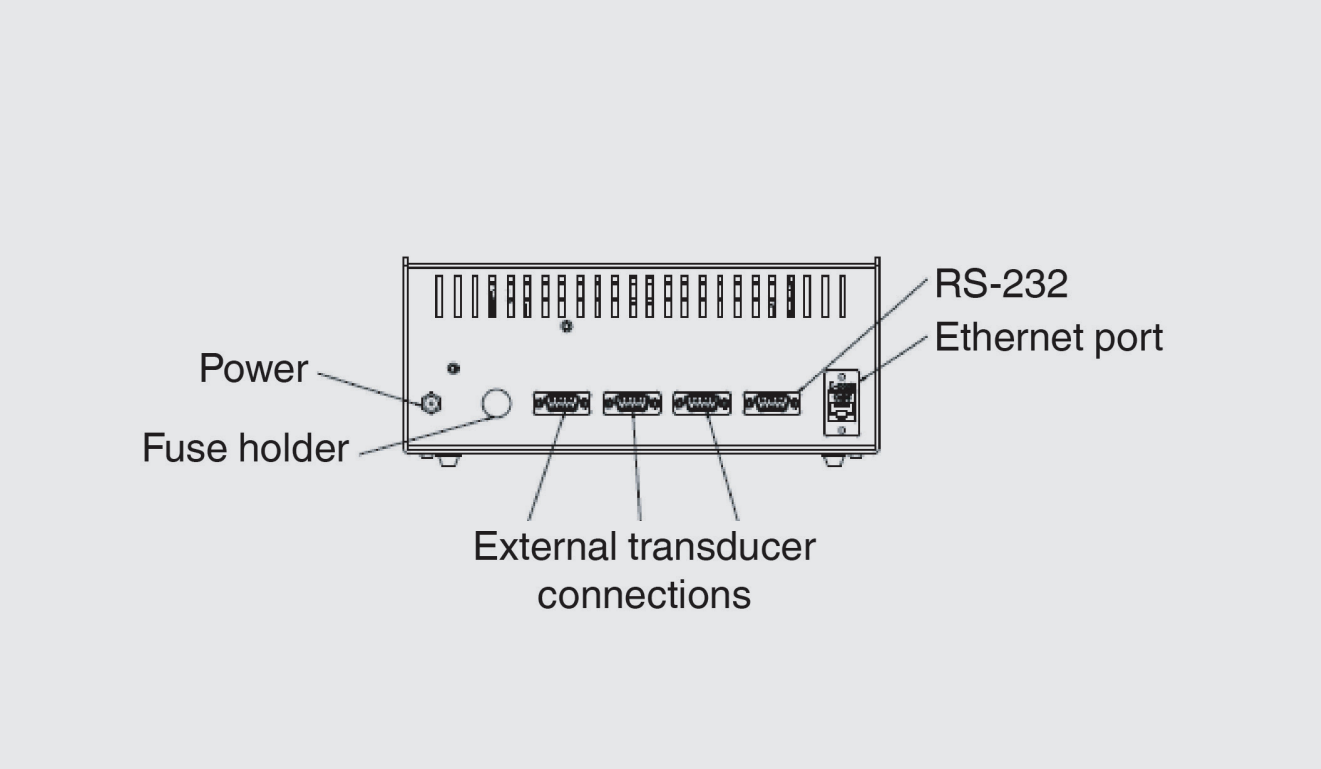
Dimensions: inches [millimeters]



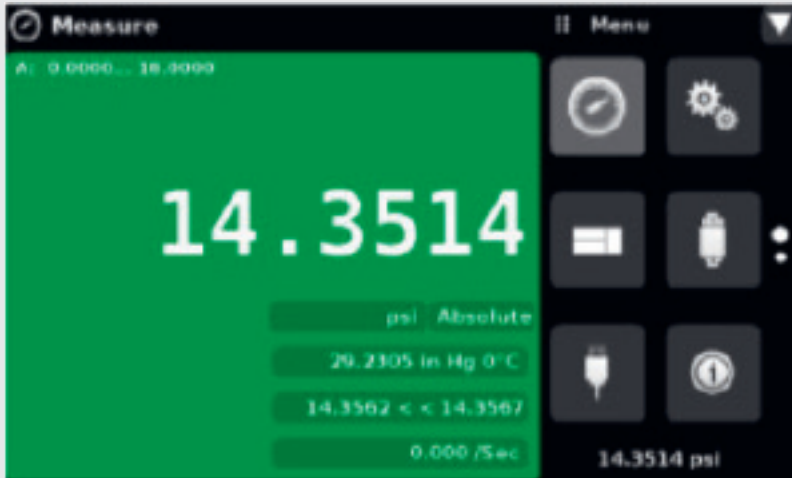
Front panel features



Rear panel features



Operator interface



Single frame channel “A” with auxiliary display of alternate units, peak, and rate.

Local operation:

The intuitive operator interface of the Model 9250 provides visibility of a channel, with, or without the auxiliary display of “Alternate Units”, “Peak”, and/or “Rate”. Pressure units for each channel and the barometer can be selected from a list of 38 metric and imperial units. The setup “apps” are continuously visible for fast configuration for various applications.

Remote operation:

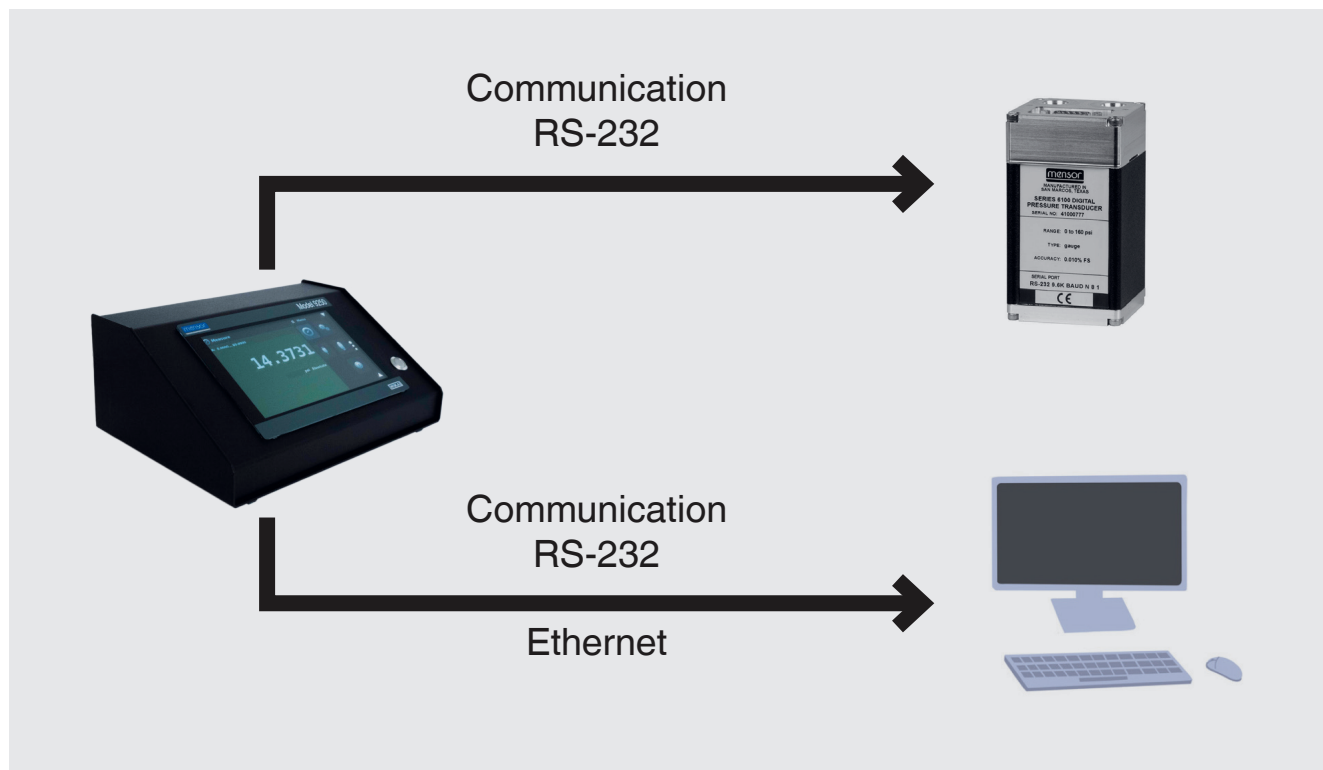
Remote control of the Model 9250 is achieved through the RS-232 or Ethernet communication interface. An RS-232 to USB adapter is available as a purchase option.

Transducer versatility

A remote transducer (Max Range $\leq 15,015$ psi) can be chosen from the “Standard Range” section. Remote transducers are Mensor CPT9000, CPT6100, CPT6180, and CPT6020 models set to communicate via RS-232 with a baud rate that can be chosen from four selectable baud rates. An optional barometric reference can also be ordered.



Applications



There are a variety of applications for the Model 9250:

- Remote transducer monitoring
- Swapping transducers to monitor different pressure ranges
- Precision barometer monitoring

Scope of delivery:

- Transducer display Model 9250
- Switching power supply with 5 ft. / 1.5m power cord
- Operating instructions

Transducer options - Model 9250

Display	Order code
3 Meter phoenix cable CONN-FLYING LEAD, MALE, SHIELDED, 3M	4050060020D
5 Meter phoenix cable CONN-FLYING LEAD, MALE, SHIELDED, 5M,	4050060023D
3ft D-sub cable FEMALE TO MALE D-SUB CABLE, 3FT	3D
15ft D-Sub Cable FEMALE TO MALE D-SUB CABLE, 15FT	15D
RS-232 to USB adapter CABLE-USB to RS232 ADAPTER	4060200005D

© 2023 WIKA Alexander Wiegand SE & Co. KG, all rights reserved.
The specifications given in this document represent the state of engineering at the time of publishing.
We reserve the right to make modifications to the specifications and materials.
In case of a different interpretation of the translated and the English data sheet, the English wording shall prevail.



Mensor
201 Barnes Drive
San Marcos, TX 78666
Tel. (512) 396-4200
Fax (512) 396-1820
sales@mensor.com
www.mensor.com