

Syphons and connecting pipes

For pressure measuring instruments

Model 910.15

WIKA data sheet AC 09.06

Applications

- Cooling element for protection from excessive heating of liquids, gases and vapours
- Protection from pressure spikes and pulsations
- Direct process connection of pressure measuring instruments or in combination with other instrumentation accessories (e.g. valves)

Special features

- Compact version suitable for vibration applications
- Customer-specific combination of valves and measuring instruments (instrument hook-up) on request
- Permissible temperatures to 550 °C [1,022 °F]
- Nominal pressures to 420 bar [6,091 psi]



Syphons, model 910.15, stainless steel
Fig. left: compact form
Fig. centre: U-form, DIN 16282 form A
Fig. right: trumpet form, DIN 16282 form C

Configurator



Standard articles



Description

The geometries of the syphons in accordance with DIN 16282 are divided into U-form, trumpet form and compact form. These syphon versions are available with threaded connection (forms A and C) or weld-in connection (forms B and D) to the process side.

In addition to the standardised syphons, connections for NPT threads following DIN 16282 and industrial standard variants are available.

Inside the syphon, condensate is collected, which prevents the ingress of hot media into the pressure measuring instrument. It is recommended to fill the syphon with a cooling barrier liquid before commissioning the pressure line.

U-form syphons are intended for horizontal pressure tapping; trumpet-form syphons are intended for vertical pressure tapping.

The length-optimised compact form minimises the influence of vibrations and protects the pressure measuring instrument from pressure spikes and pulsations.

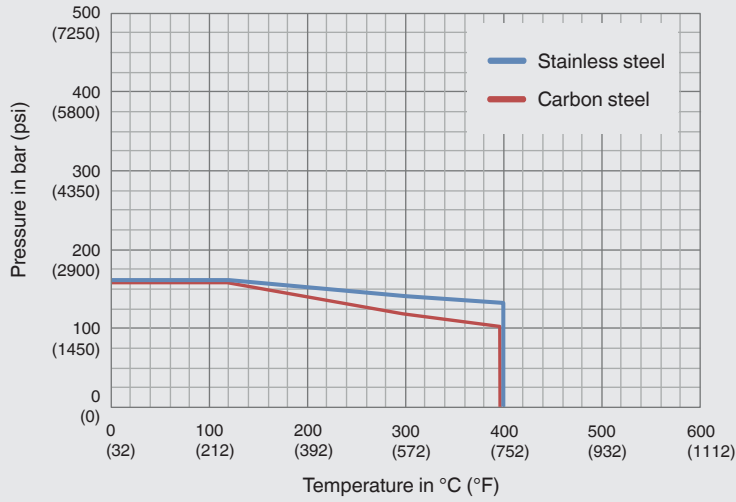
For applications that do not require a syphon, WIKA offers connecting pipes in a straight or angular (pipe elbow 90°) form.

Individual customer versions

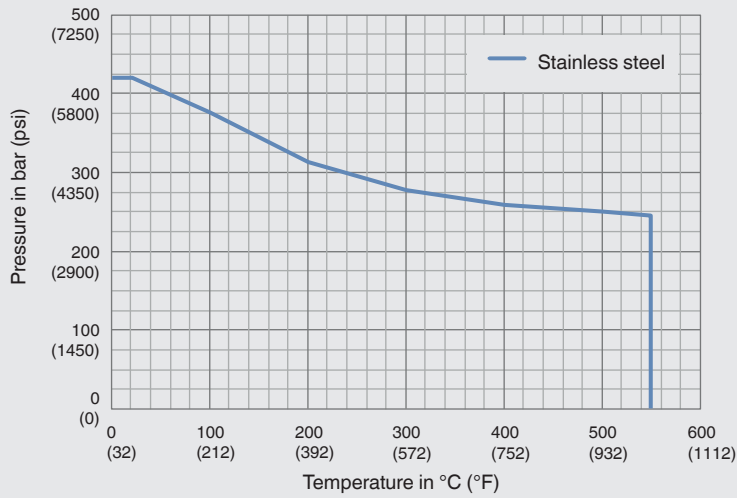
Based on many years of experience in manufacturing and development, WIKA is happy to offer support in the construction and production of customer-specific solutions.

Pressure-temperature diagrams

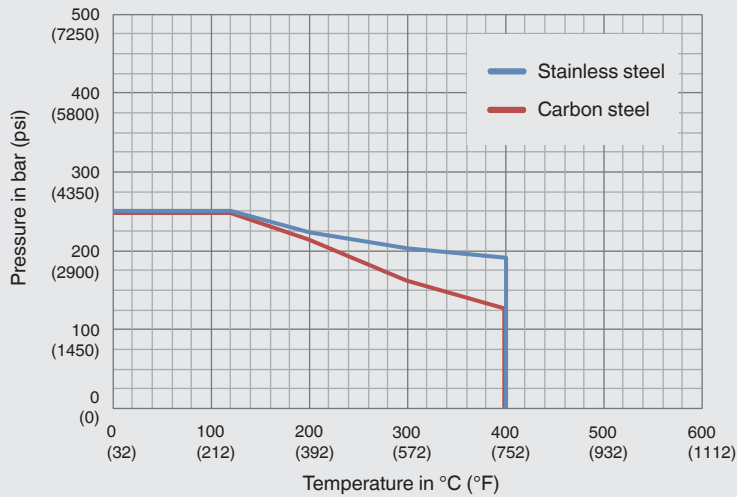
Syphon: U-form, trumpet form



Syphon: compact form



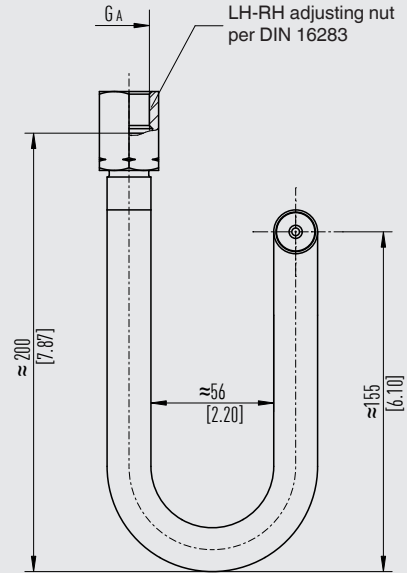
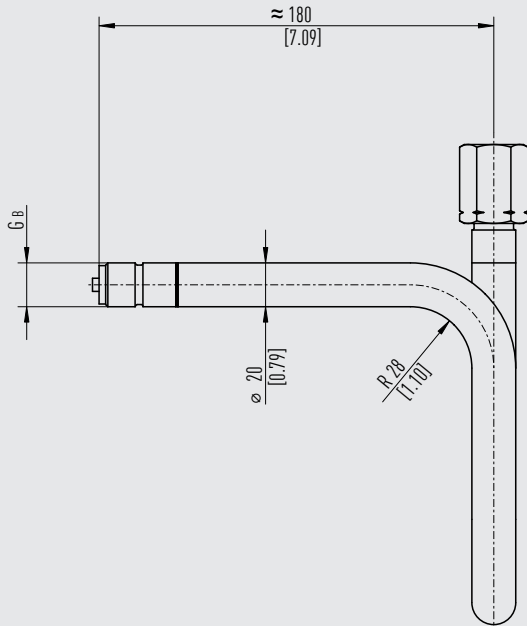
Connecting pipe: straight form and angular form



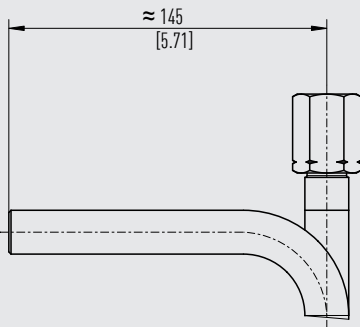
Designs per DIN 16282

Dimensions in mm [in]

U-form Form A



Form B

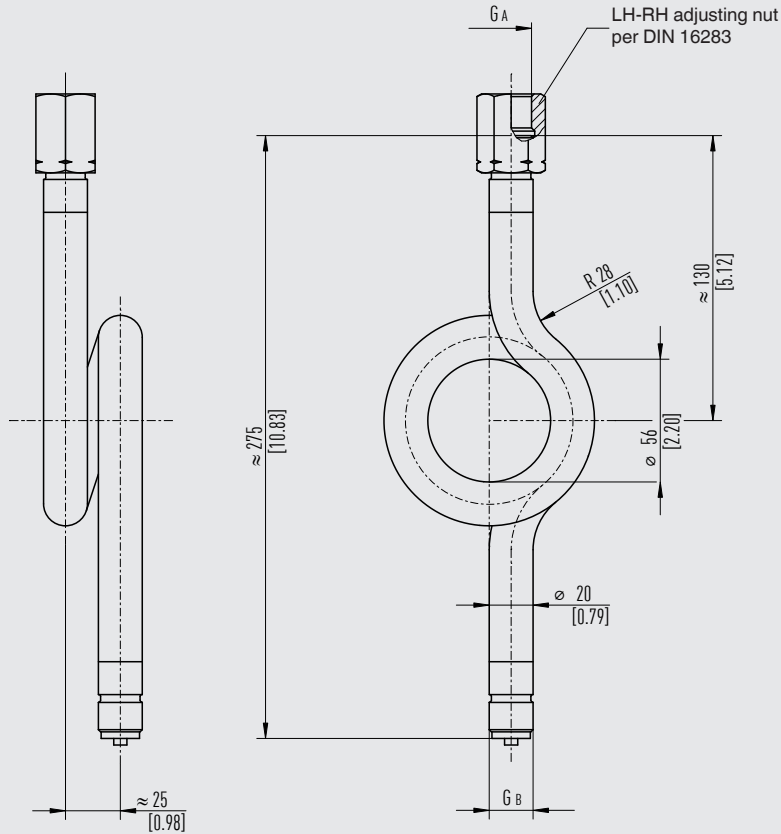


Due to the manufacturing process, the pipe dimensions at the bending points are slightly changed.

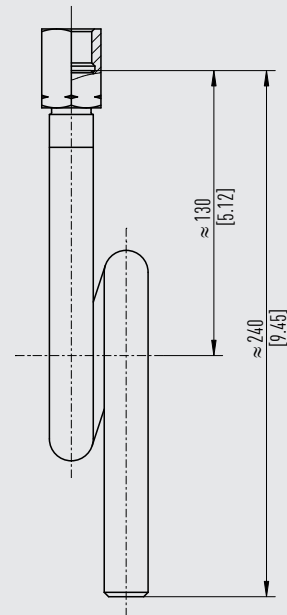
Version	G _A Instrument connection	G _B Process connection	Max. operating pressure in bar [psi]	Order number			
				Carbon steel, phosphated		Stainless steel 316L	
				Standard	With 3.1 ¹⁾	Standard	With 3.1 ¹⁾
Form A	G ½, LH-RH adjusting nut	G ½ B	160 [2,320]	9091181	2141736	9091220	2057841
Form A	M20 x 1.5, LH- RH adjusting nut	M20 x 1.5	160 [2,320]	On request	On request	On request	14160861
Form B	G ½, LH-RH adjusting nut	Weld-in, 2 x 45°	160 [2,320]	9091190	2057876	1323270	2194023

1) Including 3.1 inspection certificate per EN 10204, material proof for wetted metal parts

**Trumpet form
Form C**



Form D



Due to the manufacturing process, the pipe dimensions at the bending points are slightly changed.

Version	G _A Instrument connection	G _B Process connection	Max. operating pressure in bar [psi]	Order number			
				Carbon steel, phosphated		Stainless steel 316L	
				Standard	With 3.1 ¹⁾	Standard	With 3.1 ¹⁾
Form C	G ½, LH-RH adjusting nut	G ½ B	160 [2,320]	9091203	2329039	9091238	1323997
Form C	M20 x 1.5, LH-RH adjusting nut	M20 x 1.5	160 [2,320]	On request	14182633	On request	14137620
Form D	G ½, LH-RH adjusting nut	Weld-in, 2 x 45°	160 [2,320]	9091211	1614940	1440497	1614924

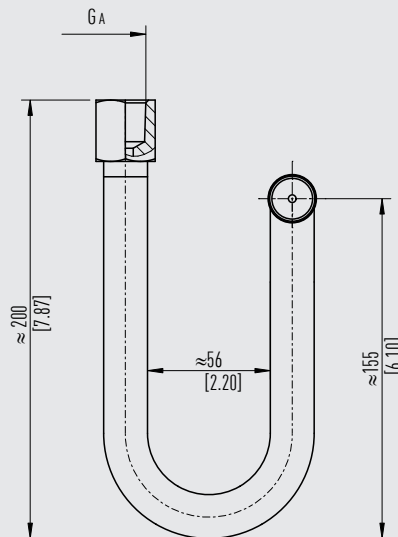
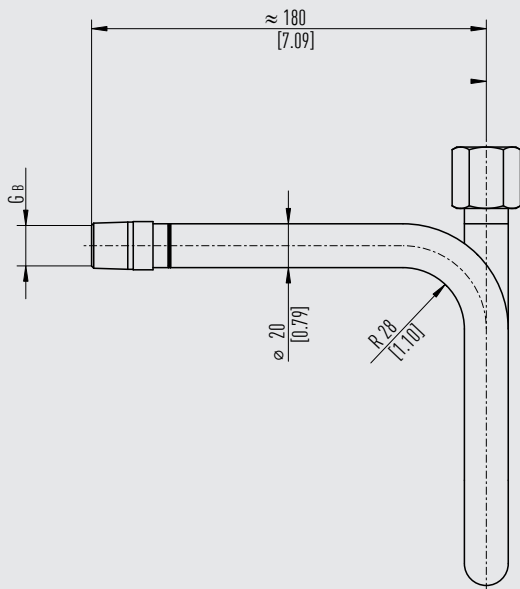
1) Including 3.1 inspection certificate per EN 10204, material proof for wetted metal parts

Designs following DIN 16282

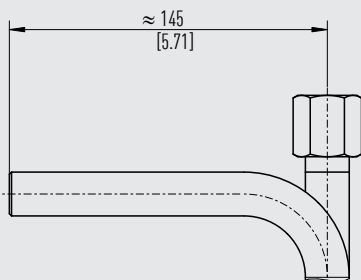
Connection thread ½ NPT

Dimensions in mm [in]

U-form Form A



Form B

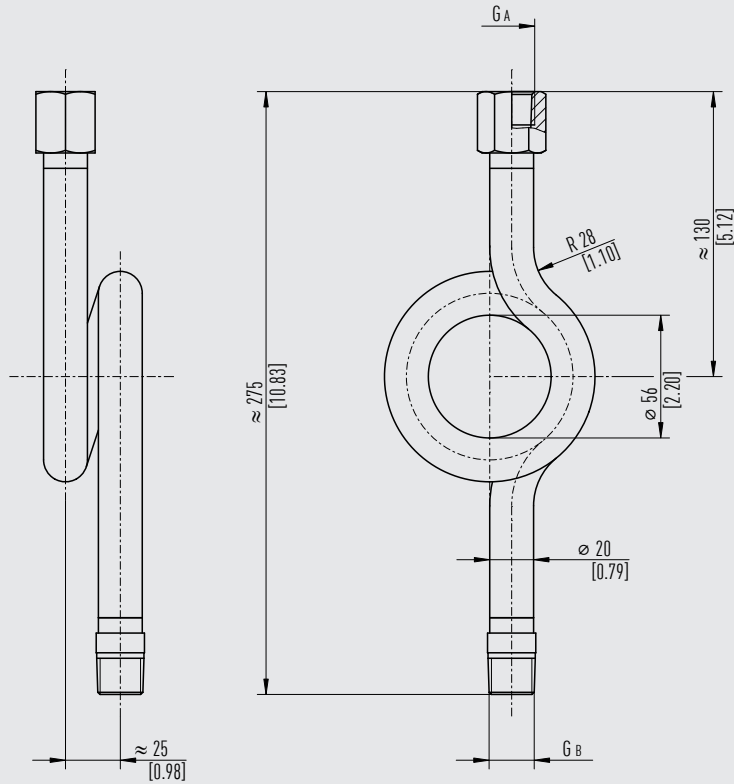


Due to the manufacturing process, the pipe dimensions at the bending points are slightly changed.

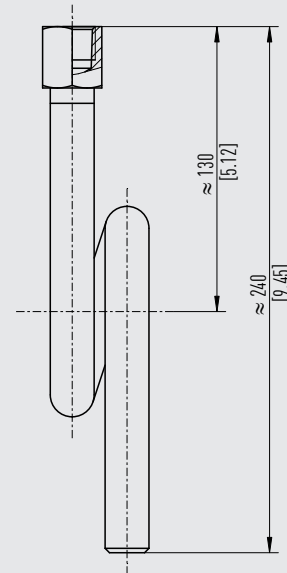
Version	G _A Instrument connection	G _B Process connection	Max. operating pressure in bar [psi]	Order number			
				Carbon steel, phosphated		Stainless steel 316L	
				Standard	With 3.1 ¹⁾	Standard	With 3.1 ¹⁾
Form A	½ NPT, connection sleeve	½ NPT, male	160 [2,320]	On request	On request	0731277	11037431
Form B	½ NPT, connection sleeve	Weld-in, 2 x 45°	160 [2,320]	14107087	On request	On request	14115561

1) Including 3.1 inspection certificate per EN 10204, material proof for wetted metal parts

**Trumpet form
Form C**



Form D



Due to the manufacturing process, the pipe dimensions at the bending points are slightly changed.

Version	G _A Instrument connection	G _B Process connection	Max. operating pressure in bar [psi]	Order number			
				Carbon steel, phosphated		Stainless steel 316L	
				Standard	With 3.1 ¹⁾	Standard	With 3.1 ¹⁾
Form C	½ NPT, connection sleeve	½ NPT, male	160 [2,320]	1034227	2449532	0763349	1323660
Form D	½ NPT, connection sleeve	Weld-in, 2 x 45°	160 [2,320]	2062014	On request	1643150	1614932

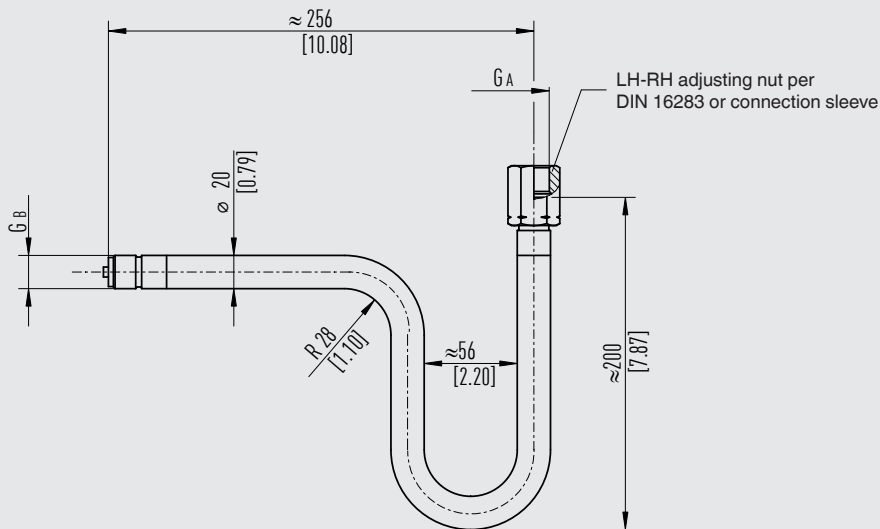
1) Including 3.1 inspection certificate per EN 10204, material proof for wetted metal parts

Industrial standard designs

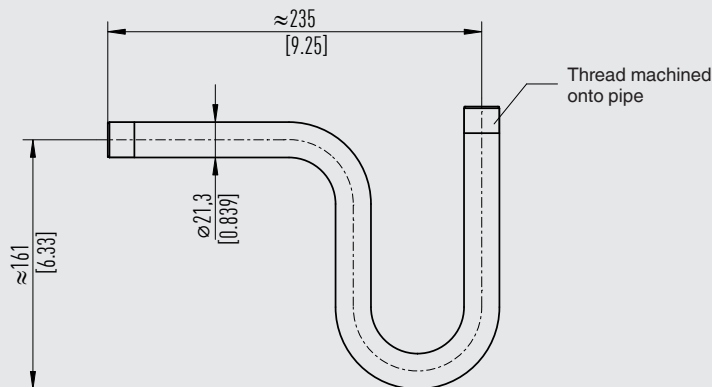
Dimensions in mm [in]

U-form, straight

With LH-RH adjusting nut or connection sleeve



With thread machined onto pipe



Due to the manufacturing process, the pipe dimensions at the bending points are slightly changed.

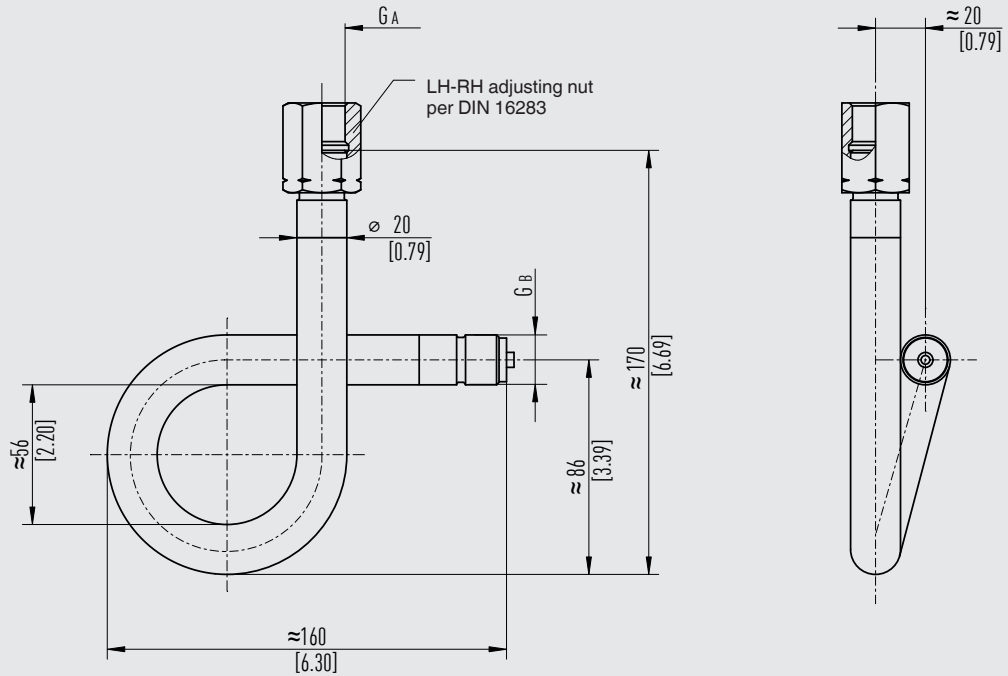
G _A Instrument connection	G _B Process connection	Max. operat- ing pressure in bar [psi]	Order number			
			Carbon steel, phosphated		Stainless steel 316L	
			Standard	With 3.1 ¹⁾	Standard	With 3.1 ¹⁾
G ½, LH-RH adjusting nut	G ½ B	160 [2,320]	9090673	On request	On request	On request
G ½, LH-RH adjusting nut	Weld-in, 2 x 45°	160 [2,320]	9090681	2446222	14130264	On request
½ NPT, connection sleeve	½ NPT, male	160 [2,320]	On request	On request	2344969	On request
G ½, LH-RH adjusting nut	G ½ B, machined onto pipe	25 [362]	9090665	On request	On request	On request
G ½, machined onto pipe	G ½ B, machined onto pipe	25 [362]	9090657 ²⁾	83129582 ²⁾	On request	On request

1) Including 3.1 inspection certificate per EN 10204, material proof for wetted metal parts

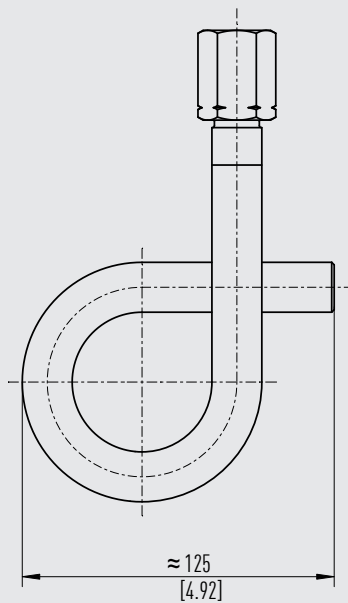
2) Carbon steel, not phosphated

270° loop form

With LH-RH adjusting nut on instrument connection and threaded process connection



With LH-RH adjusting nut on instrument connection and weld-in process connection

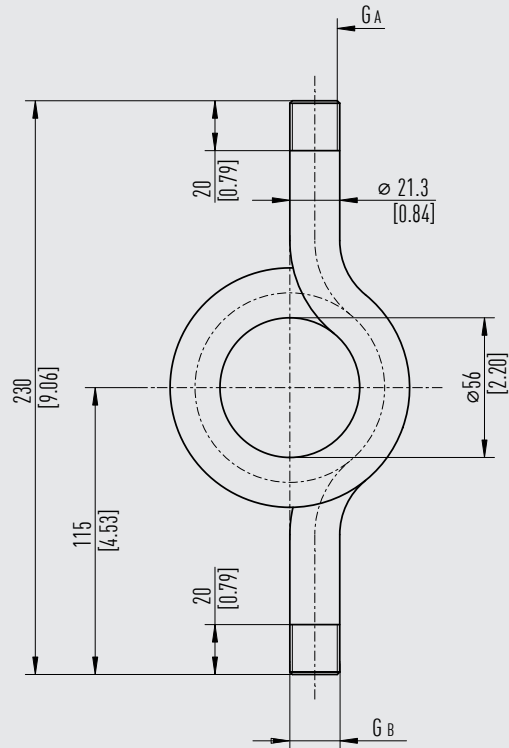


Due to the manufacturing process, the pipe dimensions at the bending points are slightly changed.

G _A Instrument connection	G _B Process connection	Max. operat- ing pressure in bar [psi]	Order number			
			Carbon steel, phosphated		Stainless steel 316L	
			Standard	With 3.1 ¹⁾	Standard	With 3.1 ¹⁾
G ½, LH-RH adjusting nut	G ½ B	160 [2,320]	On request	On request	On request	On request
G ¾, LH-RH adjusting nut	G ¾ B	160 [2,320]	On request	On request	On request	On request
G ½, LH-RH adjusting nut	Weld-in, 90°	160 [2,320]	On request	On request	On request	On request
G ¾, LH-RH adjusting nut	Weld-in, 90°	160 [2,320]	On request	On request	On request	On request

1) Including 3.1 inspection certificate per EN 10204, material proof for wetted metal parts

**Trumpet form
With thread machined onto pipe**



Due to the manufacturing process, the pipe dimensions at the bending points are slightly changed.

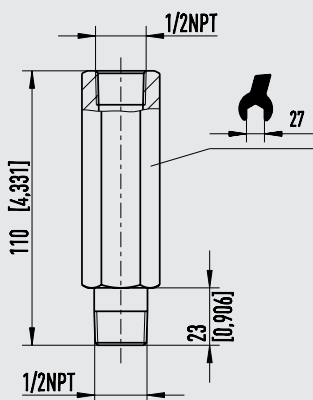
G _A Instrument connection	G _B Process connection	Max. operat- ing pressure in bar [psi]	Order number			
			Carbon steel, phosphated		Stainless steel 316L	
			Standard	With 3.1 ¹⁾	Standard	With 3.1 ¹⁾
G ½ B, machined onto pipe	G ½ B, machined onto pipe	25 [362]	9090606	35126014	On request	On request

1) Including 3.1 inspection certificate per EN 10204, material proof for wetted metal parts

Compact form

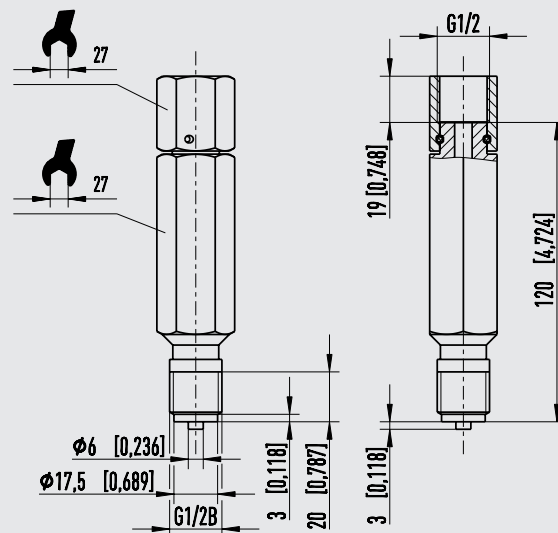
Dimensions in mm [in]

Fixed connection threads



14292481.01

With LH-RH adjusting nut on instrument side



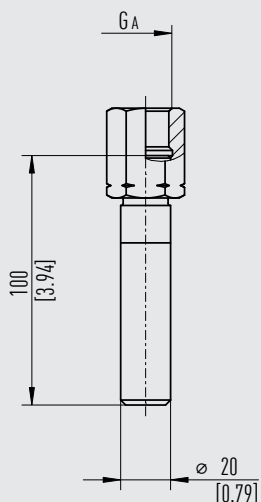
14290448.01

Version	Instrument connection	Process connection	Max. operating pressure in bar [psi]	Order number
				Stainless steel 316Ti
Compact form	½ NPT, female	½ NPT, male	420 [6,091]	11585791
	G ½, LH-RH adjusting nut	G ½ B, male	420 [6,091]	14114184

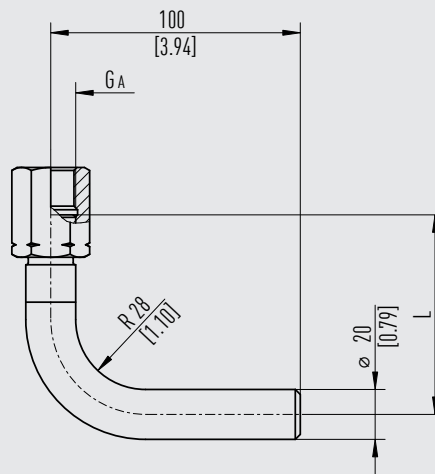
Connecting pipes for pressure measuring instruments

Dimensions in mm [in]

Straight form



Angular form (pipe elbow 90°)



Due to the manufacturing process, the pipe dimensions at the bending points are slightly changed.

Version	G _A Instrument connection	Process connection	Max. operat- ing pressure in bar [psi]	Order number			
				Carbon steel, phosphated		Stainless steel 316L	
				Standard	With 3.1 ¹⁾	Standard	With 3.1 ¹⁾
Straight form	G 1/2, LH-RH adjusting nut	Weld-in, 90°	250 [3,625]	2243679	On request	2112892	2333711
Straight form	1/2 NPT, connection sleeve	Weld-in, 2 x 45°	250 [3,625]	14147261	On request	On request	On request
Angular form	G 1/2, LH-RH adjusting nut	Weld-in, 2 x 45°	250 [3,625]	14600744	14657860	On request	14646799

1) Including 3.1 inspection certificate per EN 10204, material proof for wetted metal parts

Ordering information

To order the described product the order number is sufficient.
Options require additional specification.



© 05/1994 WIKA Alexander Wiegand SE & Co. KG, all rights reserved.
The specifications given in this document represent the state of engineering at the time of publishing.
We reserve the right to make modifications to the specifications and materials.
In case of a different interpretation of the translated and the English data sheet, the English wording shall prevail.

